



A division of  
**WGI** Westman Group Inc.



# Residential Drainage Solutions

Big 'O' / Platon® / BOSS 2000

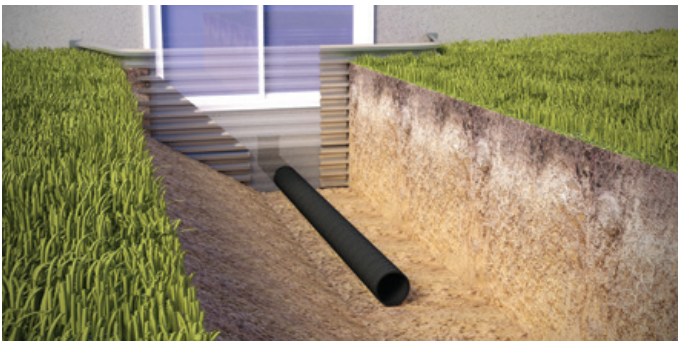
# BIG 'O' HDPE Tubing

Big 'O' High Density Polyethylene (HDPE) perforated tubing is an excellent choice for foundation drainage and other groundwater applications. Water is absorbed through spaced slits and diverted to a safe disposal area. For areas where the surrounding soil is fine and requires filtration, Big 'O' perforated tubing is available with a polyester filter sock.

Solid (non-perforated) Big 'O' tubing is designed for applications where water is diverted from one point to another, such as window wells and downspouts. Water cannot escape until it is discharged from the end of the tube to a safe location.

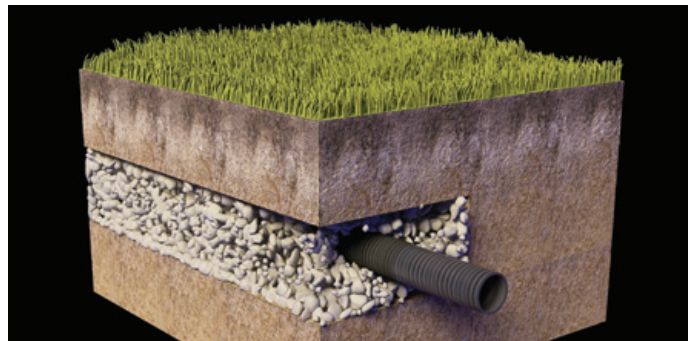
Big 'O' tubing is durable, lightweight and easy to install. It is available in a wide range of sizes with a variety of fittings. A Big 'O' drainage system will safe-guard the homeowner's investment for years to come!

**BIG 'O'** – the trusted brand for home drainage.



### Window wells

Big 'O' solid tubing quickly diverts water from basement window wells preventing damage to the home's foundation.



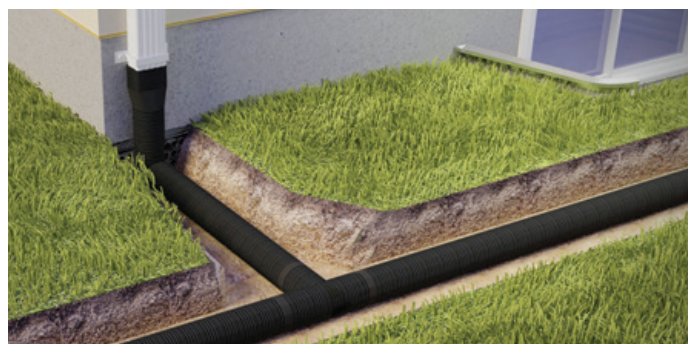
### Low spots

For wet spots in the lawn or garden Big 'O' perforated tubing installed in gravel will pick up excess water and divert it to a catch basin, storm drain or other safe disposal area.



### Foundation drains

Big 'O' perforated tubing combines with Platon wrap for a full foundation drainage solution. Installed in a gravel envelope around your home it quickly drains water away from foundation walls keeping basements comfortable and dry.



### Downspout run-off

Prevent downspout run-off from accumulating in unwanted areas by diverting it away from the home with Big 'O' solid tubing.

## PRODUCT SIZING

Product	50mm 2"	75mm 3"	100mm 4"	150mm 6"	200mm 8"	250mm 10"	300mm 12"	375mm 15"
<b>Perforated</b> (with or without filter sock)	•	•	•	•	•	•	•	•
<b>Solid</b> (non-perforated)	•	•	•	•	•	•	•	•

### Easy to Use BIG 'O' Fittings



Split Coupler



45° Wye



Tap Tee



Reducing Tee



Downspout Adapter



Insert End Cap



Insert Coupler



90° Elbow



Snap Tee



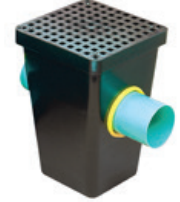
Insert Tee



Snap Adapter



Sump Liner and Lid  
22 gal (sealed unit)

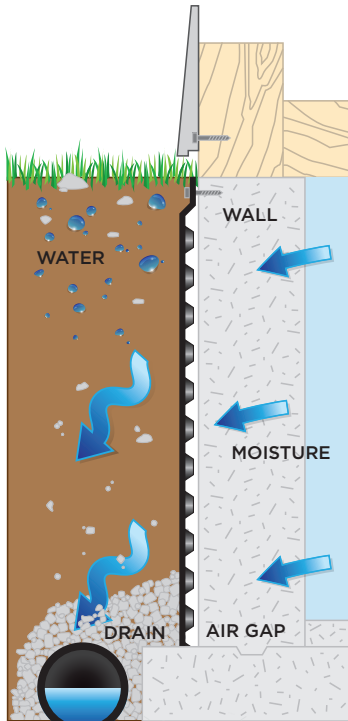


HDPE  
Drain Sumps

Description	Tubing Diameter							
	50mm 2"	75mm 3"	100mm 4"	150mm 6"	200mm 8"	250mm 10"	300mm 12"	375mm 15"
Split Coupler	•				•	•	•	•
Insert Coupler		•	•	•	•			
45° Wye			•	•				
90° Elbow			•	•				
Tap Tee	•	•	•					
Snap Tee		3 x 3 x 3	4 x 4 x 4	6 x 6 x 4	8 x 8 x (8-6) 8 x 8 x (6-4)	10 x 10 x (10-4)	12 x 12 x (12-4)	
Reducing Tee				6 x 6 x (6-4)	8 x 8 x (8-6)	10 x 10 x (10-8)	12 x 12 x (12-10)	
Blind Tee			4 x 4 x 4	6 x 6 x 6				
Insert Tee			4 x 4 x 4					
Downspout Adapter		• Rectangle	• Rectangle Square					
Snap Adapter		•	•	•	•			
Split Adapter						•	•	
Insert End Cap	•	•	•	•	•			
Split End Cap						•	•	
<b>Sump Liner and Lid - 22 gal</b> Includes accessories for a completely sealed unit to meet Building Code specifications								
<b>HDPE Drain Sumps</b> - Injection molded, 2 hole drain sump with grate and 3 snap-in watertight fittings								

# PLATON® Foundation Wrap

Platon is a rugged, dimpled high density polyethylene (HDPE) waterproof membrane that keeps foundations and flooring dry. Platon creates an impermeable vapour and air gap barrier, blocking moisture and allowing concrete to breathe.



## How Platon Works For the Foundation

The dimples create an air gap that holds the membrane and wet soil away from the foundation wall. Unlike conventional tar and spray waterproofing methods, wall moisture condenses on the back of the Platon wrap and flows to the footing drain. This dries the foundation in a way that no other technology can match. Platon's patented Speedclip connection allows walls to shift, crack or settle over the years without affecting Platon's remarkable performance.

### Double leakage protection

Holds wet soil away from the wall and provides drainage through the footing drain.

### Bridges foundation cracks

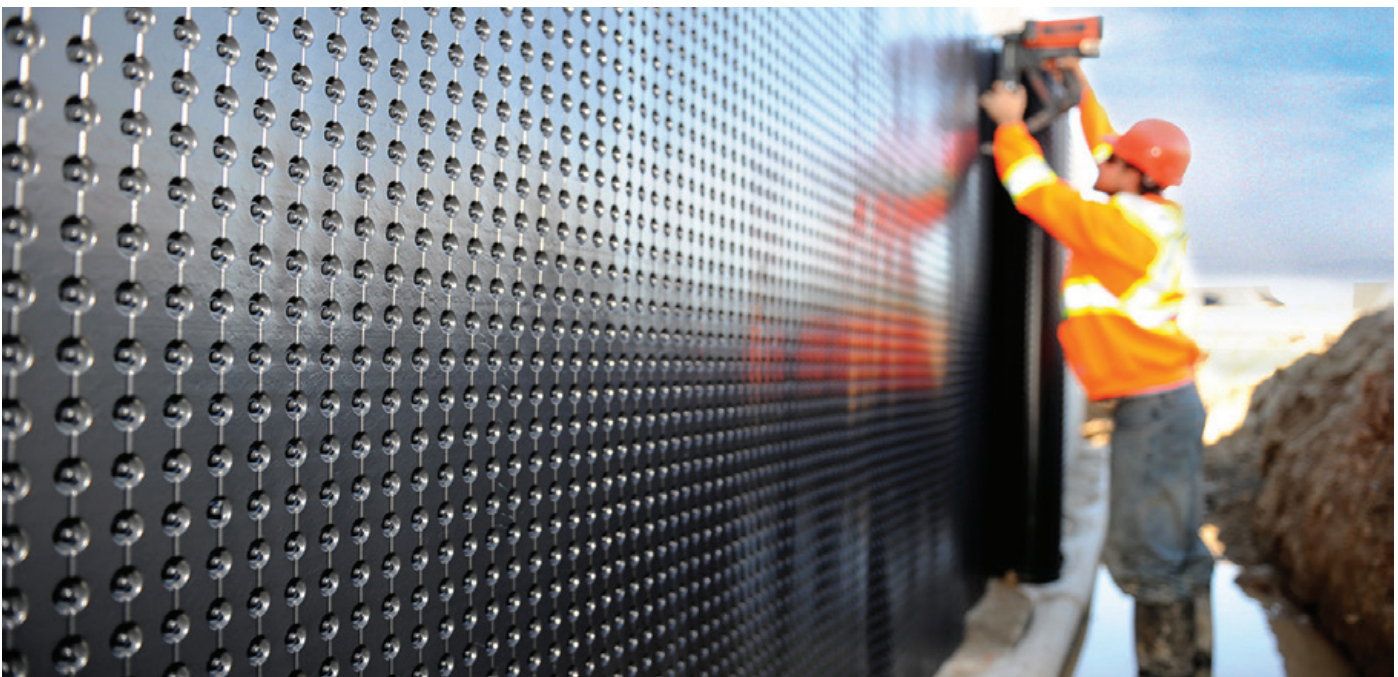
Permanently bridges foundation cracks, even if walls shift, crack or settle.

### Versatile

Works on block walls, poured concrete walls, permanent wood, insulated concrete forms and existing foundations.

### Fast and easy installation

Patented Speedclip fastens to all types of foundations in any kind of weather.



# PLATON® Subfloor Membrane

Platon can transform a cold, damp room into a dry, warm and comfortable living space. It's a unique underlay solution that protects laminates, hardwood floors and carpets from moisture, and adds comfort underfoot.



Virtually all basements have moisture problems. That's because moisture is continually released into homes through the concrete beneath the floor covering. Platon creates a moisture proof barrier and air gap between the floor and concrete, protecting the floor covering while allowing the concrete to breathe and the moisture to vent. As a result, the finished floor stays dry and warm, without build-up of mould, mildew or odours that affect the floor covering's lifespan and indoor air quality.

### Dampness protection

Lifelong protection against dampness rising through concrete floors.

### Healthy, dry air

Prevents musty odours, mould and mildew from entering living spaces.

### Comfortable

Provides a thermal break so the basement feels like it's above grade.

### Fast and easy installation

Special training or equipment is not required.

### Versatile

Platon works with just about any floor covering—carpet, laminate, hardwood or vinyl. You can even use it in conjunction with floor heating systems.

## Platon Roll Sizes

Roll Size		No. of Rolls per Skid	Area (ft <sup>2</sup> /roll)
(m)	(ft)		
3.05 x 20	10 x 65.6	6	650
2.44 x 20	8.0 (ST) x 65.6	12	525
2.44 x 20	8.0 (DT) x 65.6	12	525
2.21 x 20	7.3 x 65.6	12	476
2.07 x 20	6.95 x 65.6	12	445
1.98 x 20	6.6 x 65.6	12	426
1.83 x 20	6.0 x 65.6	12	394
1.65 x 20	5.5 x 65.6	12	355
1.13 x 15.2	3.71 x 50	24	185

#### NOTE:

ST (single tab) and DT (double tab) available in 8 foot rolls

## Accessories

Description	Pieces	Package
Speedclip	325	325 pcs / box (bulk)
Speedclip	260	4 bundles of 65 / box
Speedclip	65	65 pcs / bundle
Moulding	10	10 pcs / bundle
Plugs	250	8 bags / box

### SCAN THIS CODE

Learn how easy it is to install Platon in your home.



# BOSS 2000 HDPE Drainage Pipe



BOSS 2000 pipe combines the strength of a corrugated outer shell with a smooth inner wall to optimize drainage. Its long length and light weight allow for fewer joints, quicker installation and economical shipping. Manufactured from durable high density polyethylene, BOSS 2000 is abrasion resistant and withstands impact in all weather conditions. It can be factory perforated and fitted with a filter sock for subdrain applications. Available in 210kPa pipe stiffness, BOSS 2000 is ideal for driveway culverts and other applications where CSA certification is not required.

## Features and Benefits



### Lightweight

Its light weight allows for safe handling and quick installation with minimal equipment



### Hydraulic Performance

The smooth interior ensures optimum flow capacity for a variety of drainage applications



### Cost Effective

Less equipment and manpower required for installation



### Chemical/Abrasion Resistant

Highly resistant to chemical attack and abrasive environments



### UV Resistant

A minimum of 2% carbon black additive protects against UV light deterioration



### Durable

Highly durable; withstands impact in all weather conditions

## Wide range of fabricated and moulded fittings and couplers available

### Fittings Available

- Tees
- Wyes
- Elbows
- Crosses
- Repair couplings
- Concentric reducers
- Eccentric reducers
- End caps
- Manhole adapter

### Couplers Available

- External double bell snap couplers (100mm - 200mm)
- External split couplers (250mm - 900mm)
- Repair couplers
- Ultra-Stab (gasketed bell and spigot) joints, when required



BOSS HDPE PIPE PRODUCTION USES ADVANCED MANUFACTURING TECHNOLOGY

## BOSS 2000 Specifications

<b>STOCKED LENGTHS</b>	6 metres
<b>CUSTOM LENGTHS</b>	Available on special order
<b>STOCKED STIFFNESS</b>	320 kPa (100mm - 900mm) - CSA 182.8 210 kPa (250mm - 900mm)
<b>JOINING SYSTEMS</b>	<b>WATER-TIGHT</b> (CSA 182.8 Type 1, BNQ 3624-120) <ul style="list-style-type: none"> <li>• Ultra Stab 75 (100mm - 900mm)</li> </ul> <b>SOIL-TIGHT</b> (CSA 182.8 Type 3, BNQ 3624-120) <ul style="list-style-type: none"> <li>• External double bell 'snap' coupler (100mm - 200mm)</li> <li>• External 'split' coupler (250mm - 900mm)</li> </ul>
<b>APPLICABLE STANDARDS</b>	CSA B182.8, BNQ 3624-120

**NOTE:**  
PERFORATED PIPE AND FILTER SOCK AVAILABLE ON SPECIAL ORDER. PLEASE CONTACT AN ARMTEC REPRESENTATIVE FOR FURTHER INFORMATION.

<b>NOMINAL INSIDE DIAMETERS</b> (mm)	100	150	200	250	300	375	450	525	600	750	900
<b>OUTSIDE DIAMETERS</b> (mm)	120	177	234	292	361	444	540	627	726	895	1,087
<b>PROFILE TYPE ANNULAR</b> (A)	A	A	A	A	A	A	A	A	A	A	A

**NOTE:**  
MANNING'S 'N' VALUE = 0.012

A selection of non-woven geotextile sock is also available for critical applications. Armtec carries a complete line of geotextile products in rolls for a complete trench wrap French drain package. Armtec can recommend a material type for all applications.



**BOSS 2000**  
VARIOUS SIZES TO ACCOMMODATE ALMOST ANY PROJECT



**BOSS 2000**  
DETAIL OF 300mm



Armtec is environmentally conscious  
by supporting limited paper usage.

#### **ATLANTIC**

Shediac, NB  
Sackville, NB  
Truro, NS  
Bishop's Falls, NL  
St. John's, NL

#### **CENTRAL**

Cambridge, ON  
Comber, ON  
Forest, ON  
Guelph, ON  
Orangeville, ON  
Peterborough, ON  
Sudbury, ON  
Thunder Bay, ON  
Walkerton, ON  
Woodstock, ON  
St-Augustin, QC  
St-Clet, QC

#### **PRAIRIES**

Calgary, AB  
Edmonton, AB  
Grande Prairie, AB  
Ponoka, AB  
Redwater, AB  
Winnipeg, MB  
Regina, SK  
Saskatoon, SK

#### **WESTERN**

Dawson Creek, BC  
Genelle, BC  
Langley, BC  
Nanaimo, BC  
Prince George, BC



Platinum member

To find out more about Armtec's **Residential Drainage Solutions**  
contact us today.

Orangeville **519-942-2643** • Walkerton **519-392-6929**  
Forest **519-786-5742**

**armtec.com**